

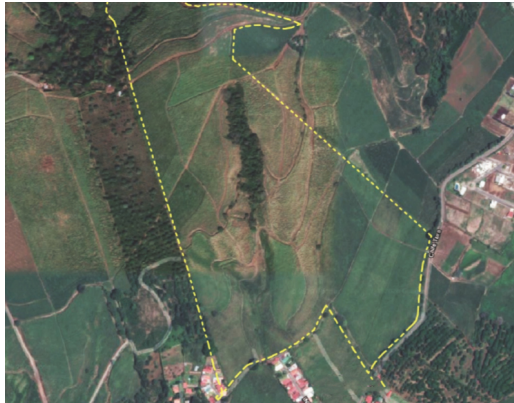
Land of 37 hectares in Tacares, Grecia Alajuela, 18738

📍 Grecia, Alajuela

\$9,252,550

ID: 18738

Property Type: Land • Size: 370,102 sq m •



Frente de propiedad



Entrada principal a la finca



- Status: Active/Published
- Investment Opportunities
- Close To Transport
- Mountain View
- Development Farm

Property Description

Welcome to this fascinating property with low density residential and commercial land use! Located in a privileged area, this property has all the basic services available. Its excellent location places it close to the center of Grecia, only 1 km away. In the vicinity of the property, you will find a wide variety of commercial and institutional services, such as schools, colleges and shopping malls. In addition, this area is distinguished by a constant residential growth, with middle and upper middle class homes and apartments. The property is located within the Future Development Zone (ZDF), which means it has great potential for urban development. Agricultural activities and some housing uses currently take place in the FDZ, but it is expected to become a tier three priority for urban growth in the future. In terms of permitted uses, this zone contemplates the possibility of building warehouses, grocery stores, parks, community halls, amphitheaters, gymnasiums, schools, residences and small factories.

Additional

- ID 18738
- Active/Published
- For Sale
- Land
- \$9,252,550

Toll Free: 1-877-272-3747 +506 2653-1919

Plaza Conchal, Tamarindo, Costa Rica



COLDWELL BANKER
TAMARINDO
REALTY