

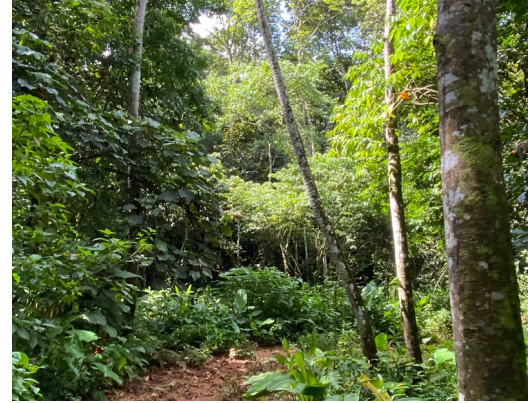
Old Cocoa Farm with Valley Views, Lots of Usable Land

\$275,000

ID: 18884

📍 Dominical, Puntarenas

Property Type: Land • Size: 60,702 sq m •



- Status: Active/Published
- Close To Shops
- Mountain Properties
- Acreage
- Investment Opportunities
- Mountain View
- Close To Schools
- Jungle Views
- Valley Views

Property Description

This is a great opportunity to either develop a residential community or create your own little farm. About 80% of the area is usable land. There used to be an old cocoa plantation. It is still there but since this land has not been touched over the last 30 years, everything is overgrown. There are internal roads which are in good shape. The property touches a public road. Electricity, legal water from the Platanillo ASADA and fiber optics are right at the entrance of the property. Enjoy the climate of Platanillo, hop on the car and catch some waves in Dominical, which is only 15 minutes of a drive or go shopping in San Isidro, get there in 30 minutes. This is a great deal, you get a big piece of land for a very reasonable price!

Additional

- ID 18884
- Active/Published
- For Sale
- Land
- \$275,000
- View : Valley

Toll Free: 1-877-272-3747 +506 2653-1919

Plaza Conchal, Tamarindo, Costa Rica



COLDWELL BANKER
TAMARINDO
REALTY