

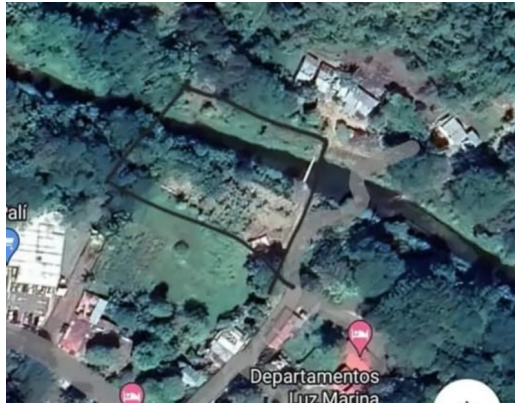
# LARGE RESIDENTIAL LOT IN RURAL COASTAL TOWN - ALL SERVICES

📍 Paquera, Puntarenas

## \$58,000

ID: 19989

Property Type: Land • Size: 1,500 sq m •



- Status: Active/Published
- Close To Schools
- Investment Opportunities
- Bbq Area
- Close To Shops
- River Views
- Cable Satellite Tv
- Close To Transport

## Property Description

Spacious Residential Lot in a Tranquil Coastal Paradise - All Amenities Included Discover the perfect canvas for your coastal dreams with this generously sized residential lot in a peaceful rural setting. Located near the town center yet tucked away on a quiet off-street, this property boasts a unique charm. **Property Highlights:** **Convenient Location:** Enjoy the best of both worlds – the convenience of being near the town center and the tranquility of a quiet off-street location. All essential services are within easy reach. **Nature's Serenade:** Delight in the soothing ambiance of a small, year-round stream that borders the property. It's like having your own natural soundtrack. **Ideal for Vacation Living:** This location is perfect for those seeking a vacation home near the beach with an added layer of security. Your retreat awaits in this serene coastal haven. **Versatile Possibilities:** With its ample size, this lot is large enough to accommodate two or even three houses, making it a versatile investment opportunity.

## Additional

- ID 19989
- Active/Published
- For Sale
- Land
- \$58,000
- View : River

**Toll Free: 1-877-272-3747 +506 2653-1919**

Plaza Conchal, Tamarindo, Costa Rica



**COLDWELL BANKER**  
TAMARINDO  
REALTY