

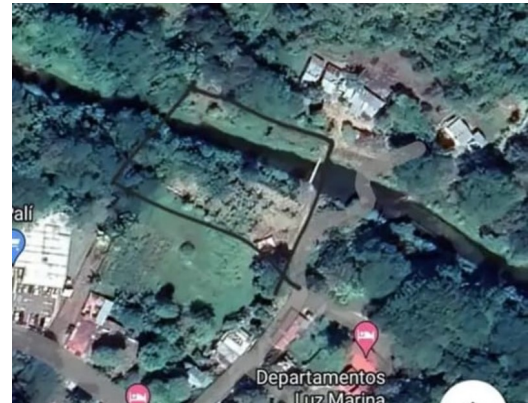
TOWN LOT BORDERING RIVER - MANY FRUIT TREES - BEGINNING HOUSE CONSTRUCTION

\$58,000

ID: 20318

📍 Paquera, Puntarenas

Property Type: Land • Size: 804 sq m •



- Status: Active/Published
- Close To Shops
- Sub Dividable
- Bbq Area
- Close To Transport
- Water Views
- Close To Schools
- Investment Opportunities
- Parking Spaces

Property Description

A large sized lot in the middle of town but neatly sequestered away by the Guardial River, An abundance of fruit trees of several types, bananas, papayas, and much more. The pad is in for a small house but construction has stopped. This is a perfect homesite, next to the river and quiet but close to town services, all at a low price.

Additional

- ID 20318
- Active/Published
- View : River
- For Sale
- Land
- \$58,000
- Parking Spaces : 5

Toll Free: 1-877-272-3747 +506 2653-1919

Plaza Conchal, Tamarindo, Costa Rica



COLDWELL BANKER
TAMARINDO
REALTY