

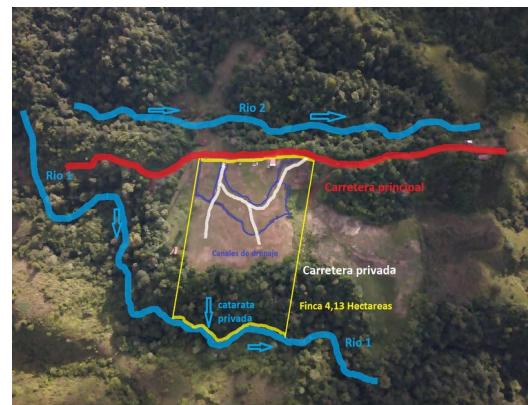
Property in Sarapiquí: Natural Retreat with Endless Possibilities

📍 Sarapiquí, Heredia

\$200,000

ID: 20620

Property Type: Land • Bedrooms: 2 • Size: 41,300 sq m • Built: 2010



- Status: Active/Published
- Mountain Properties
- Storage Unit
- Waterfall View
- Development Farm
- Mountain View
- Sub Dividable
- Parking Spaces
- Investment Opportunities
- River Views
- Valley Views

Property Description

This stunning property, located at an altitude of 960 meters above sea level, offers an exceptional mountain climate with temperatures ranging from 15-18°C at night to 21-27°C during the day. Bordered by a pure mountain river with a private waterfall, this fenced estate is designed with terraces, providing multiple levels for paths and drainage channels. With electricity supplied by an exclusive 50 kW transformer, the property features a small house, originally intended for guests or workers, with unfinished interiors and exteriors. Additionally, there's a workshop/storage space for added versatility. Sourced directly from a mountain river or spring, the property's water supply is pure and free from chlorine or chemicals. Surrounded by evergreen flora and fauna, the estate offers a tranquil and secure environment without the disturbance of constant neighbors. Boasting internet access via fiber optic cable, this property offers a reliable connection amid lush nature.

Additional

- ID 20620
- Active/Published
- 2 Bedrooms
- For Sale
- Land
- Parking Spaces : 4
- \$200,000
- 2 Bathrooms
- View : Mountain

Toll Free: 1-877-272-3747 +506 2653-1919

Plaza Conchal, Tamarindo, Costa Rica



COLDWELL BANKER
TAMARINDO
REALTY