

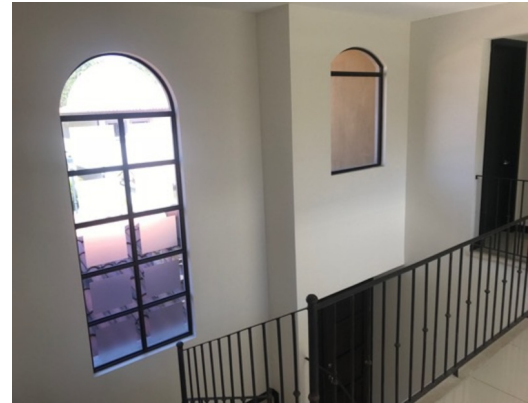
Two-Storey Condominium in Guachipelin de Escazú

\$390,000

ID: 12642

📍 Escazu, San Jose

Property Type: Condo • Bedrooms: 3 • Size: 299 sq m • Built: 2013



- Status: Active/Published
- Association Fee
- Close To Transport
- Luxury Estate
- Playground
- Security Access
- Parking Spaces
- Bbq Area
- Fully Landscaped
- Luxury Rental
- Pool
- Air Conditioning
- City Properties
- Furnished Partially
- Pets Allowed
- Rental Program

Property Description

Condominio de Dos Plantas en Guachipelin de Escazú Condominium amenities: Pool, BBQ ranch, play area for children, perimeter wall with electric fence, 24/7 security at the gate, underground electricity, asphalt streets. Description of the house: Ground Floor: 2 rooms, one of them with a double height that gives a lot of elegance, dining room, kitchen, office, half bathroom, laundry area and bedroom with service bathroom. Indoor parking for two cars. Garden at the rear of the plot. Upstairs: Master bedroom with walk-in closet and bathroom, two bedrooms, each with its own full bathroom. All three bedrooms have independent air conditioning and blinds. Maintenance fee \$ 390 per month, pets are allowed. It also rents for \$ 2,400 per month.

Additional

- ID 12642
- Active/Published
- 3 Bedrooms
- For Sale
- Condo
- Parking Spaces : 2
- \$390,000
- 2.5 Bathrooms

Toll Free: 1-877-272-3747 +506 2653-1919

Plaza Conchal, Tamarindo, Costa Rica



COLDWELL BANKER
TAMARINDO
REALTY