

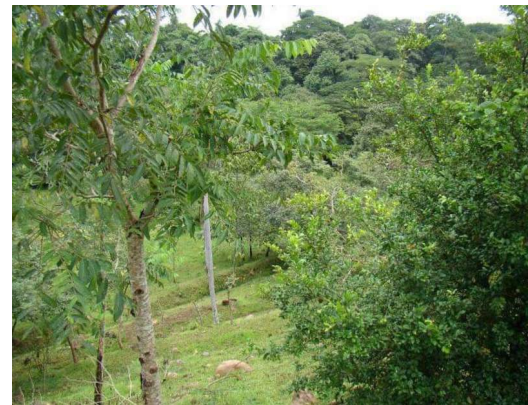
Farm in Orotina

📍 Orotina, Alajuela

POA

ID: 14068

Property Type: Land • Size: 44,594 sq m •



- Status: Sold
- Close To Schools
- Acreage
- Close To Shops
- Close To Golf

Property Description

-In Cuatro Esquinas, Orotina Alajuela-High Potential Property in a High Value Area Ideal for Tourism Development.-
Property of 44,594 m2 (4,459 hectares)-All public services and usable land with very easy access and with spacious and large green areas.-The climate and pleasant temperatures and a comfortable and quiet area are ideal elements to enjoy life with quality and fullness!-Almost half of the property runs through the Machuca River, consequently with great potential for Tourism Development - Urban Development or Agriculture!-Surrounded by a lot of nature With water source inside the property!-A distance of 45 minutes from Multiplaza Escazu along the San José Caldera Route / 25 minutes from Atenas through Mount del Aguacate.-The price is \$ 13 per m2

Additional

- ID 14068
- Sold
- For Sale
- Land
- POA

Toll Free: 1-877-272-3747 +506 2653-1919

Plaza Conchal, Tamarindo, Costa Rica



COLDWELL BANKER
TAMARINDO
REALTY