

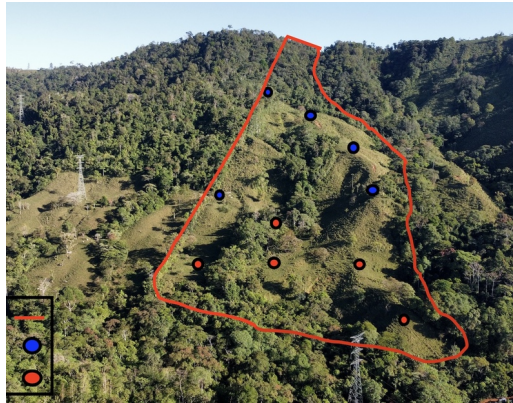
Whales Tail and Ocean View Farm, Over 40 acres

\$450,000

ID: 17696

📍 Uvita, Puntarenas

Property Type: Land • Size: 161,874 sq m •



- Status: Active/Published
- Close To Shops
- Jungle Views
- Ocean View
- Acreage
- Development Farm
- Mountain Properties
- Close To Schools
- Investment Opportunities
- Mountain View

Property Description

If what you are looking is some land for your retirement in paradise or simply start a new life with your family in the tropical forests of Costa Rica, this is your best option. This farm is located in San Luis, a 25 minute drive from Uvita on a well maintained gravel road, the property is mostly cow pastures and forest. This land has a spring located at the top of the mountain running down on one side of the property line creating the waterfall that is at the entrance of this lovely farm. At the top of the farm you will find the most panoramic ocean views and the Largest of the multiple building sites. This Farm has electricity right at the entrance with public road access. Since it's only been a farm, the property has never been developed so you have the opportunity to create all the interior roads and building sites in order to start your project, or just excavate one area and keep the rest of the farm to grow a multitude of crops.

Additional

- ID 17696
- Active/Published
- For Sale
- Land
- \$450,000
- View : Ocean

Toll Free: 1-877-272-3747 +506 2653-1919

Plaza Conchal, Tamarindo, Costa Rica

